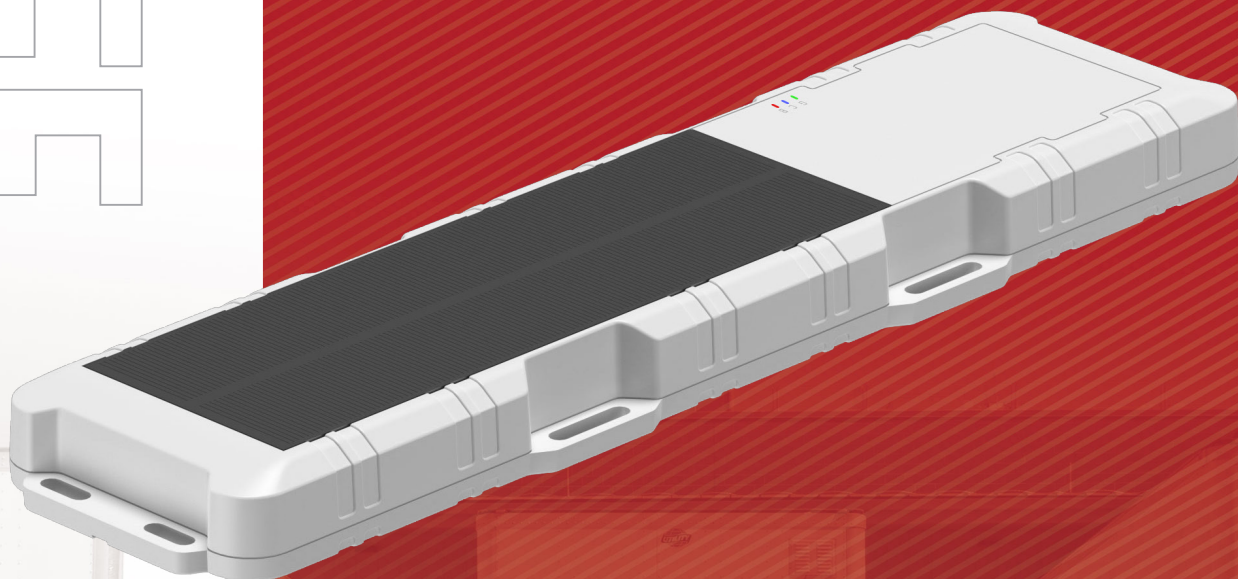


GOSAFE

GAT3000

SOLAR POWERED ASSET TRACKER



APPLICATIONS



Transport &
Logistic



Container
Tracking



Asset
Management



Trailer Tracking

Gosafe

your trusted partner

GAT3000

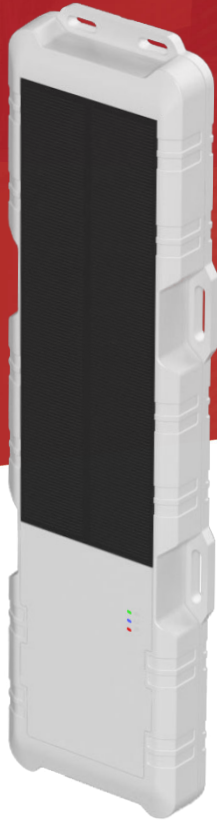
LTE SOLAR POWERED ASSET TRACKER

KEY FEATURE

- ⊗ LTE Cat with Global 2G, LTE Cat M-1
- ⊗ Highly sensitive GPS engine
- ⊗ Extensive Power Management
- ⊗ 10000 mAh Rechargeable Battery
- ⊗ High effective power solution: solar power, backup battery, low power consumption

YOUR BENEFIT

- ⊗ Get visibility of your asset and container
- ⊗ Improves efficiency and productivity
- ⊗ Increase your asset utilization, security and efficiency



Solar Power Tracker

The solar-powered GAT3000 is a powerful, ultra-rugged, waterproof IP 67 wireless GPS tracker with a 10000mAh rechargeable battery and long standby time. The efficient solar panel can charge the internal battery to send more than 15 messages daily, and easy over-the-air configurations can be implemented on the go. Multiple reporting modes make it ideal for trailer, asset, and equipment tracking.

Features



4G connectivity with
fallback 2G



WiFi Location



Bluetooth 4.2
for sensor



Solar Panel for continous
charging



Easy configuration



Highly sensitivite GPS

SPECIFICATIONS

GENERAL

Communication Mode	LTE/GPRS and TCP/UDP/SMS
Location Technology	56 Channels GNSS
Operating Voltage	12 and 24 Volt Vehicle Systems

CELLULAR

Data Support	SMS, TCP, UDP
LTE CAT-1	B1/ 2/ 3/ 4/ 5/ 7/ 8/ 12/ 13/ 17/ 18/ 19/ 20/ 25/ 26/ 28/ 66
LTE Power	Class 5 (20dBm)
LTE Data	CAT-1: DL: 10Mbps, UL: 5Mbps
GSM/3G	850/900/1800/1900 Mhz
GPRS Power	Class 10
SIM Card	1.8/3.3V

INTERFACE

Status LEDs	GPS, Cellular, Power
BLE 4.2	for Wireless Sensor
Detach Sensor	Proximity Detach

CONNECTORS, SIM CARD ACCESS

Mini USB	1 Mini USB (configuration/debug)
GPS Antenna	Internal
Cellular Antenna	Internal
SIM Card	Internal (4FF)

ON BOARD

CPU	ARM Cortex M3
Flash Memory	4Mbit (8000 records)
3D Accelerometer	On Board

PHYSICAL

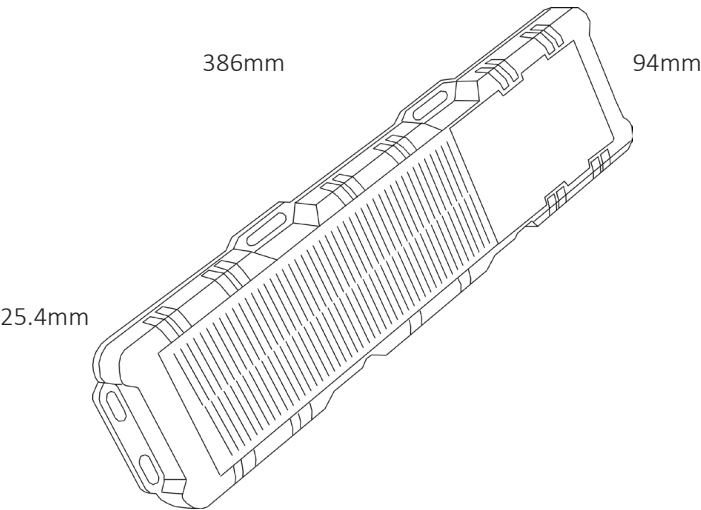
Dimensions	354.0 x94.0 x 25.4 mm
Weight	700g with 10000 mAh Battery

GPS

Location Technology	GPS Engine
	GPS/Glonass/Galileo/BeiDou
	GPS/QZSS L1 C/A, Glonass L10F
	BeiDou B1, Galileo E1 B/C
	SBAS L1 C/A: WAAS, EGNOS, MSAS, GAGAN
Concurrent GNSS	3
Update Rate	1 Hz
Channels	56
Tracking sensitivity	-167dBm
Cold Start Open Sky	30S
Aided Start	2S
Reacquisition	1S
Assisted GPS	Supported
Antenna	Patch Internal

ELECTRICAL

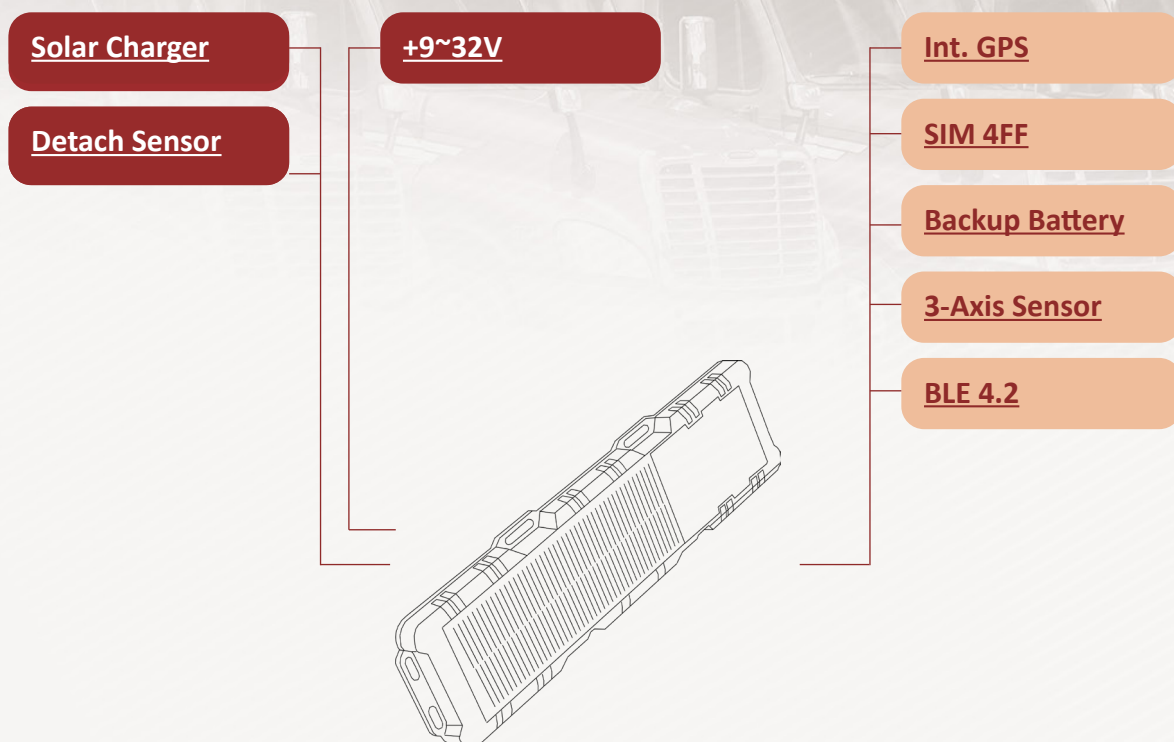
Operating Voltage	5VDC
Standby Time without	1 Position a day 300 days
Solar Charging	4 Position a day 150 days
	24 Position a day 80 days
Backup Battery	LI-PO 10000mAh
	Battery Recharging Range is 0 to +45°C



ENVIRONMENTAL

IP Rating	IPX7
Operating Temperature	-40 ~ +85°C (without Backup Battery)
	-10 ~ +50°C (with Backup Battery)
Humidity	95%RH @ 50°C non-condensing
Shock & Vibration	U.S. Military Standards 202G and 810F, SAE J1455
EMC/EMI	SAE J1113; FCC–Part 15B
RoHS	Compliant (Optional)

Applications



Ordering Models

Model	Connectivity	Region
GAT3000-LTA	LTE CAT-1	LATAM Version
GAT3000-LT	LTE CAT-1	EMEA-ANZ Version
GAT3000-LTE	LTE CAT-1	NA Version
GAT3000	LTE CAT-M	NA Version

Gosafe Company Limited

☎ +86 (20) 8200-6896

✉ info@gosafesystem.com

🌐 www.gosafesystem.com

📍 RM C1-1103-1104, Innovation Building, No.182 Kexue Ave.,
Science & Tech City, Guangzhou-510663, China