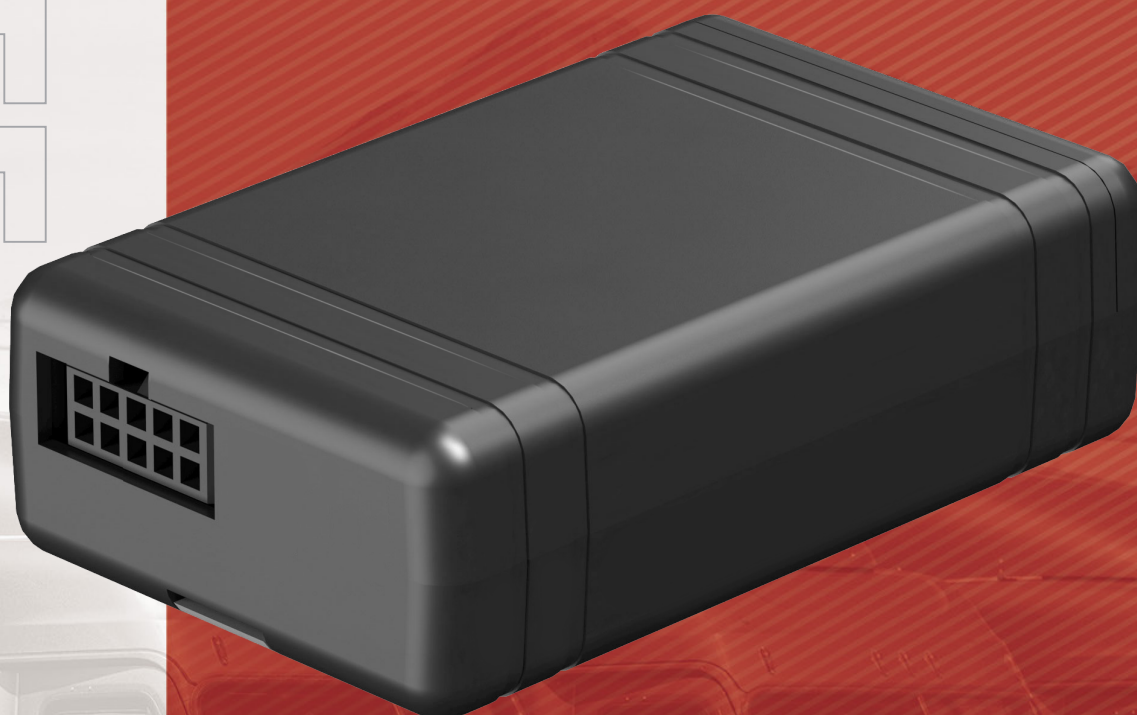


GOSAFE

G610

LOW COST GPS TRACKER



APPLICATION



Fleet
Management



Food & Beverage
Delivery Fleet



Government &
Public Safety



Agriculture

Gosafe®

your trusted partner

G610

LOW COST GPS TRACKER

KEY FEATURE

- > LTE CAT-1/2G Modem version
- > Crash Data up to 100Hz with 4Hz GPS update
- > BLE 4.2 for Wireless Sensor(coming soon)
- > WIFI Location where GPS is not available(coming soon)
- > 200 Hardware based Geo-Fences
- > Driving Behavior
- > 1-Wire Interface
- > Multiple Input & Outputs
- > Internal Backup Battery

YOUR BENEFIT

- > Get visibility of fleet and driver
- > Improves efficiency and productivity
- > Reduces fuel and operational expenses
- > Increases driver safety



The full-featured device with innovative technology

G610 is designed for service providers, integrators, and enterprise customers to enhance mobile resources and improve their dispatch system. The G610 is a dependable LTE CAT-1 and 2G tracking device, delivering the key features fulfilling the most demanding applications: fleet management, insurance telematics, dispatch, vehicle location and recovery, and more.

Features



4G connectivity with fallback 2G



WiFi Location



Bluetooth 4.2 for sensor



Multiple interface for various monitoring and control



Configurable digital inputs and analog inputs



Driver behavior monitoring

SPECIFICATIONS

GENERAL

Communication Mode	LTE/GPRS and TCP/UDP/SMS
Location Technology	56 Channels GNSS
Operating Voltage	12 and 24 Volt Vehicle Systems

CELLULAR

Data Support	SMS, TCP, UDP
LTE CAT-1	B1/2/3/4/5/7/8/12/13/17/18/ 19/20/25/ 26/28/66
LTE Power	Class 5 (20dBm)
LTE Data	CAT-1: DL: 10Mbps, UL: 5Mbps
GSM/3G	850/900/1800/1900 Mhz
GPRS Power	Class 10
SIM Card	1.8/3.3V

INTERFACE

Digital Inputs	2 Digital inputs
Ignition Sense	One dedicated wire for Ignition
Programmable Input	One configurable input to negative trigger digital input or analog input
Digital Output	Two digital outputs, open drain, 300mA drive current max
Latched Digital O/P	One digital output with internal latch circuit, open drain, 150mA drive max
1-Wire Solution	1 wire interface (Driver ID)
Status LEDs	GPS, Cellular, Power
BLE 4.2	for Wireless Sensor

CONNECTORS, SIM CARD ACCESS

Connector Type	10 Pin Molex
Mini USB	1 Mini USB (configuration/debug)
Power Switch	Device Power ON/Off Switch
GPS Antenna	Internal
GSM Antenna	Internal
SIM Card	Internal (4FF)

ON BOARD

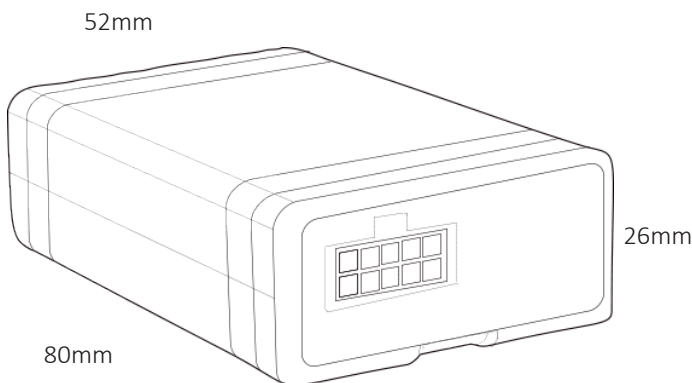
CPU	ARM Cortex M3
Flash Memory	4Mbit (8000 records)
3D Accelerometer	On Board

GPS

Location Technology	GPS Engine GPS/Glonass/Galileo/BeiDou GPS/QZSS L1 C/A, Glonass L10F BeiDou B1, Galileo E1 B/C SBAS L1 C/A: WAAS, EGNOS, MSAS, GAGAN
Concurrent GNSS	3
Update Rate	1 Hz
Channels	56
Tracking sensitivity	-167dBm
Cold Start Open Sky	30S
Aided Start	2S
Reacquisition	1S
Assisted GPS	Supported
Antenna	Patch Internal

ELECTRICAL

Operating Voltage	8-40V DC operational for 12V & 24V Vehicle support per SAE J1455
Power Consumption	3mA 12V (Sleep) 60mA 12V (Power Save) 120mA 12V (Active Tracking)
Backup Battery	LI-PO 220mAh (Optional) Battery Recharging Range is 0 to +45°C



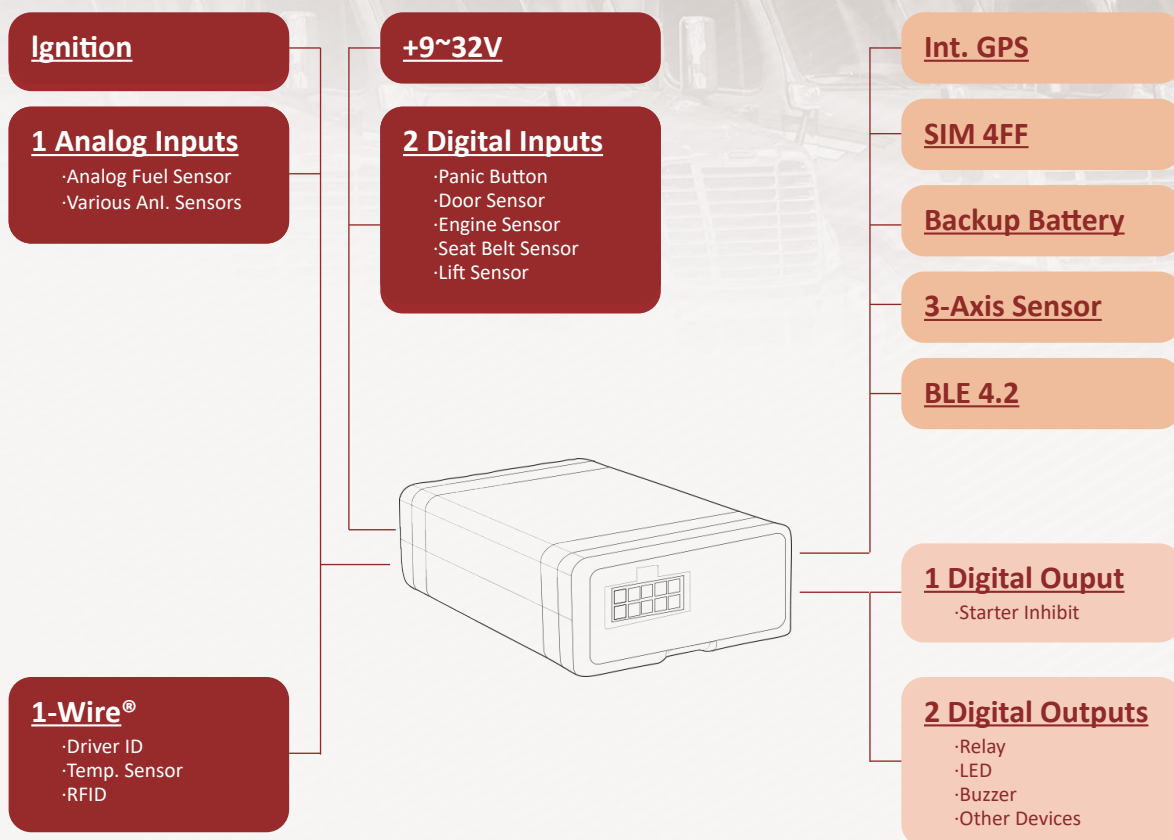
PHYSICAL

Dimensions	80(L) x 52(W) x 26(H)mm
Weight	80g (Without Battery)

ENVIRONMENTAL

IP Rating	IPX2
Operating Temperature	-40 ~ +85°C (without Backup Battery) -10 ~ +50°C (with Backup Battery)
Humidity	95%RH @ 50°C non-condensing
Shock & Vibration	U.S. Military Standards 202G and 810F, SAE J1455
EMC/EMI	SAE J1113; FCC-Part 15B
RoHS	Compliant (Optional)

Applications



Ordering Models

Model	Connectivity	Region
G610-LTA	LTE CAT-1	LATAM Version
G610-LT	LTE CAT-1	EMEA-ANZ Version
G610-LTE	LTE CAT-1	NA Version
G610	2G	Global

Gosafe Company Limited

+86 (20) 8200-6896

info@gosafesystem.com

www.gosafesystem.com

RM C1-1103-1104, Innovation Building, No.182 Kexue Ave.,

Science & Tech City, Guangzhou-510663, China